



งานบริหารและส่งเสริมการวิจัย
กองบริหารงานวิจัย มหาวิทยาลัยมหิดล
โทร. 02-849-6158 โทรสาร. 02-849-6247

ที่ อว 78.016/ท 8084

วันที่ 12 พฤศจิกายน 2567

เรื่อง ประชาสัมพันธ์ทุน ISPF Early Career Fellowships in Epidemiology and Control of Infectious Diseases (Thailand, Laos and Cambodia)

เรียน คณบดี / ผู้อำนวยการ

ด้วย International Science Partnerships Fund (ISPF) ประกาศรับสมัครอาจารย์/นักวิจัยเข้ารับทุน ISPF Early Career Fellowships in Epidemiology and Control of Infectious Diseases (Thailand, Laos and Cambodia) เพื่อทำวิจัย ณ Imperial's School of Public Health เป็นระยะเวลา 6-12 เดือน อาจารย์/นักวิจัยรุ่นใหม่ที่จะรับการศึกษาระดับปริญญาเอกหรือเทียบเท่าสามารถส่งใบสมัคร CV Letter of Recommendation จาก PhD Supervisor หรือ Advisor ได้ที่เว็บไซต์ https://imperial.eu.qualtrics.com/jfe/form/SV_cSyR2hAE4Y8Bp0G ตั้งแต่วันที่ 30 พฤศจิกายน 2567 เวลา 23.59 น. ตามเวลา BST (วันที่ 1 ธันวาคม 2567 เวลา 05.59 น. ตามเวลาประเทศไทย) เท่านั้น ทั้งนี้ อาจารย์/นักวิจัยที่สนใจสมัครขอรับทุนดังกล่าวสามารถศึกษารายละเอียดข้อกำหนดอื่น ๆ เพิ่มเติมจากเว็บไซต์ <https://shorturl.at/pKC7a>

ในการนี้ กองบริหารงานวิจัย มหาวิทยาลัยมหิดล จึงขอแจ้งข่าวประกาศทุนมายังท่าน เพื่อโปรดประชาสัมพันธ์ทุนวิจัยดังกล่าวให้บุคลากรในหน่วยงานของท่านทราบโดยทั่วกัน และขอให้อาจารย์/นักวิจัยโปรดส่งสำเนาเอกสารการสมัครมายังกองบริหารงานวิจัย เพื่อบันทึกในฐานข้อมูลของมหาวิทยาลัยภายในวันที่ 6 ธันวาคม 2567 และโปรดประสานงานการจัดทำสัญญาเมื่อได้รับทุนต่อไป

จึงเรียนมาเพื่อโปรดทราบและโปรดประชาสัมพันธ์ข่าวต่อไป จักเป็นพระคุณยิ่ง

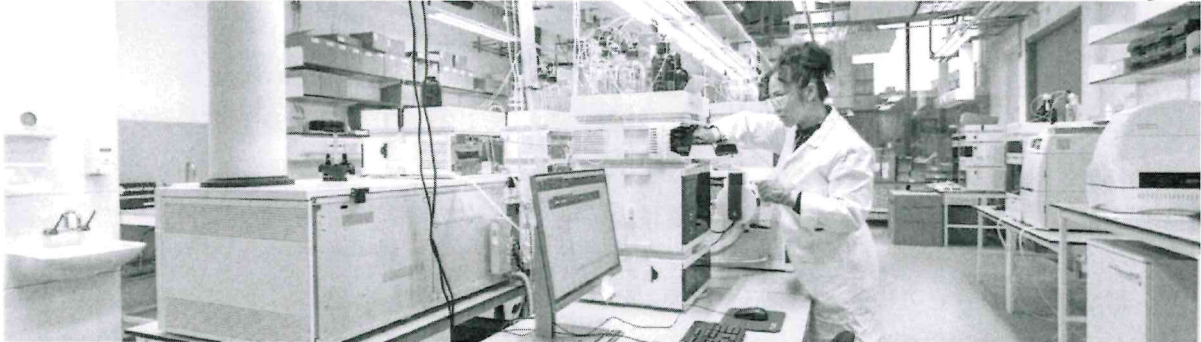
(รองศาสตราจารย์ ดร.ยศชนัน วงศ์สวัสดิ์)

รองอธิการบดีฝ่ายวิจัย



รายละเอียดโครงการ

ISPF Early Career Fellowships in Epidemiology and Control of Infectious Diseases (Thailand, Laos and Cambodia)



Opportunity for early career academics from Thailand, Laos or Cambodia to spend up to a year at Imperial
Applications & Webinar

Applications are now open
[Click here to apply](#)

Webinar: October 3rd 10AM-11AM (UK Time)
[Click here to register](#)

Funded by the UK Government's International Science Partnerships Fund (ISPF) and delivered in partnership with the British Council, the Early Career Fellowship scheme will enable three early career researchers from Thailand, Laos and/or Cambodia who have recently completed a research qualification (PhD or equivalent), to complete visiting placements within the MRC Centre for Global Infectious Disease Analysis (GIDA) and the Abdul Latif Jameel Institute for Disease and Emergency Analytics (Jameel institute). Placements will commence in the 2024/25 academic year.

MRC GIDA is an international centre of excellence for research and training in epidemiology, infectious disease modelling, pathogen genomics and health economics. The Jameel Institute focuses on containing health emergencies, strengthening health systems and building partnerships and capacity. Within these remits, the programme seeks to support fellows to collaborate internationally and gain access to new research environments, facilities, and expertise

in order to enhance the quality of their research and support translation into economic and societal benefit. Research must be compliant with ODA research aims and have potential for outcomes that promote the sustainable socio-economic development of countries in the cohort.

The latest date for submission is 30th November, 23:59 (BST). However, applications will be reviewed on a rolling basis and we may therefore close recruitment early if suitable candidates have been identified.

To learn more about the Fellowship, please join us for an information session on October 3rd, 10AM-11AM (UK Time). You can register for this webinar [here](#).

Guidance

- [Opportunity](#)
- [Eligibility](#)
- [How to apply](#)
- [Further questions](#)

The Early Career Fellowship will support recent PhD (or equivalent) graduates, one from Thailand and one from Cambodia or Laos, to undertake a visiting research placement for 6 - 12 months based at Imperial's School of Public Health's new [White City Campus](#).

Fellows will have a supervisor within [MRC GIDA](#) or the [Jameel Institute](#), as well as access to Imperial's academic and professional support provided to all early career academics. Eligible supervisors can be identified on the MRC GIDA and Jameel Institute's webpages.

Placements can be between 6 to 12 months in duration and **must begin before 31st March 2025 at the latest**, in agreement with the host department/institute. **The latest date for applications is 30th November 2024. However, applications will be reviewed on a rolling basis and we may therefore close recruitment early if suitable candidates have been identified.**

Please provide the name(s) of your proposed host supervisor(s) within MRC GIDA and the Jameel Institute whose research fits best

with your area of interest. **You do not need to contact proposed supervisors to submit an application.**

The Fellowship will provide:

- A non-taxable stipend of £31K per annum
- £8,000 per 12 months (pro rata for shorter fellowships) for research-related expenses. This can contribute to consumables, small equipment, travel and subsistence within the UK, publication costs, or other expenses related directly to the research project.
- IELTS exam fee (for scholars without a valid Test of English)
- Return economy-class travel from home country to UK
- Visa, insurance and NHS surcharge costs

- **Eligibility**

- **How to apply**

- **Further questions**

To be eligible for the ISPF Early Career Fellowship, you must:

- Be a permanent resident of Thailand, Laos or Cambodia.
- Be an early career researcher - recently completed a research or academic qualification (PhD or equivalent) and not be in an established academic post with a research-related role or function. *
- Meet the English language requirement of Imperial College London.
- The scheme is open to everyone meeting the eligibility criteria, and women are particularly encouraged to apply.

You are also required to show in your application form that:

- You have a plan for the research activities to be undertaken during your placement, and their relationship to your PhD or previous work, to show this will contribute to your career development.
- You are willing to demonstrate future contribution to capacity-building and socio-economic advancement through the benefits achieved after completing the Fellowship and returning to your home country.
- You have a plan and a passion to engage other early career researchers from your home country.

- You agree to your personal data being shared with the British Council as a condition of applying for the bursary and agree to maintain contact with the British Council for purposes of monitoring and evaluation during and after your fellowship.

*NB: If a researcher does not hold a PhD but has research experience equivalent to a PhD holder and works in a field where a PhD is not a prerequisite for established research activity, they can still be considered eligible. Participants from for-profit organisations cannot be funded. As we move toward greater inclusivity for ECRs from a wide range of backgrounds, we are no longer counting years spent in a specific career stage. Career breaks and alternative trajectories to an early academic career are all considered outside the definition of career stage.

You are not eligible for an ISPF Early Career Fellowship if you:

- Are an employee of the British Council or the UK Scottish, Welsh, or Northern Irish governments.
- Are currently in receipt of financial support or funding towards any other programme in the UK from any other sources

- [How to apply](#)

- [Further questions](#)

Applications are now open and can be completed online [here](#) until 30th November 23.59 (BST) - applications will be reviewed on a rolling basis and we may therefore close recruitment early if suitable candidates have been identified.

In order to complete the application, applicants will need to provide:

1. Details on background to show how the eligibility criteria are met.
2. A two-page academic CV
3. A case for support for the fellowship (up to four sides), including:
 - a. A description of your recent work and any planned research outputs
 - b. Areas of research you are interested in as aligned with the research of MRC GIDA and/or the Jameel Institute
 - c. A scientific case for the fellowship

- d. Specific training, in research techniques or methods, that will be enabled by this fellowship
 - e. How you think this placement would help in your contribution to capacity-building and socio-economic advancement in your country?
 - f. Demonstrate a plan and a passion to engage other early career researchers from your home country.
 - g. Your motivation for applying and plans for your future career advancement.
4. A letter of recommendation from your PhD institution, preferably your PhD supervisor or advisor, addressing your skills and suitability for the placement.

Please provide the name(s) of your proposed host supervisor(s) within MRC GIDA and the Jameel Institute whose research fits best with your area of interest. Supervisors should be identified from the MRC GIDA (<https://www.imperial.ac.uk/mrc-global-infectious-disease-analysis/about-us/people/principal-investigators/>) and Jameel Institute (<https://www.imperial.ac.uk/jameel-institute/people/>) web pages. **You do not need to contact proposed supervisors to submit an application**, but should identify supervisors that you feel best fit with your proposed research area. These will be reviewed as part of the shortlisting process and if your application is shortlisted there will be an opportunity to discuss with potential supervisors.

- **Further questions**

For any concerns about academic matters, the application process or other technical issues, please contact:

Susannah Fisher:

Scientific Manager for the MRC Centre for Global Infectious Disease Analysis (MRC GIDA), with the Department of Infectious Disease Epidemiology.

Email: s.fisher@imperial.ac.uk

And/or, the International Relations Office:

Email: international.relations@imperial.ac.uk

Address: International Relations Office

Imperial College London
Faculty Building Level 2
South Kensington Campus
London
SW7 2AZ