

JSPS's Collaborative Program with Thailand

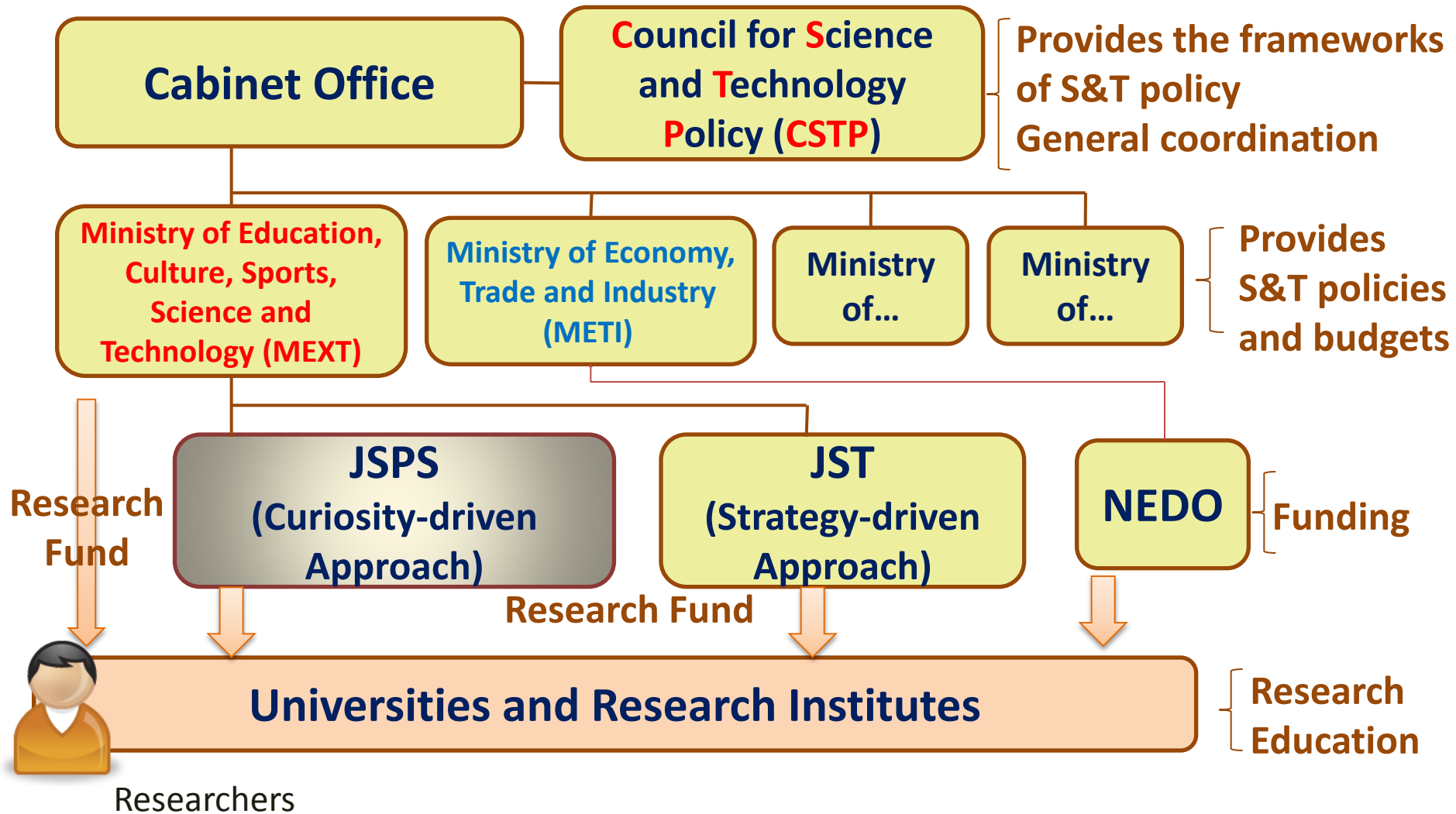
2 May 2014

Kuniaki YAMASHITA, Director

Hiromi TODOROKI, International Program Associate

JSPS Bangkok Office

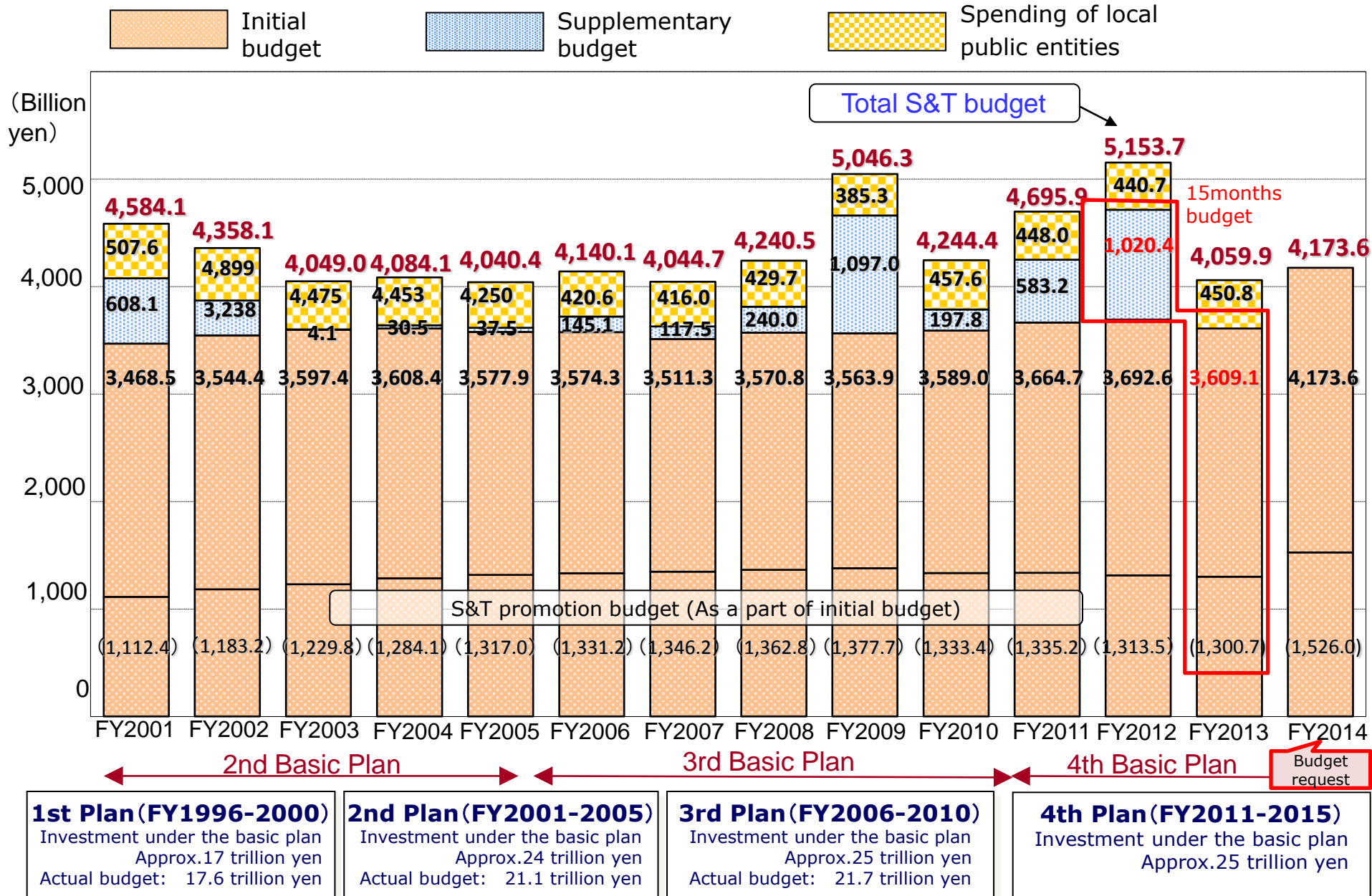
S&T Policy System in Japan



S&T Budget

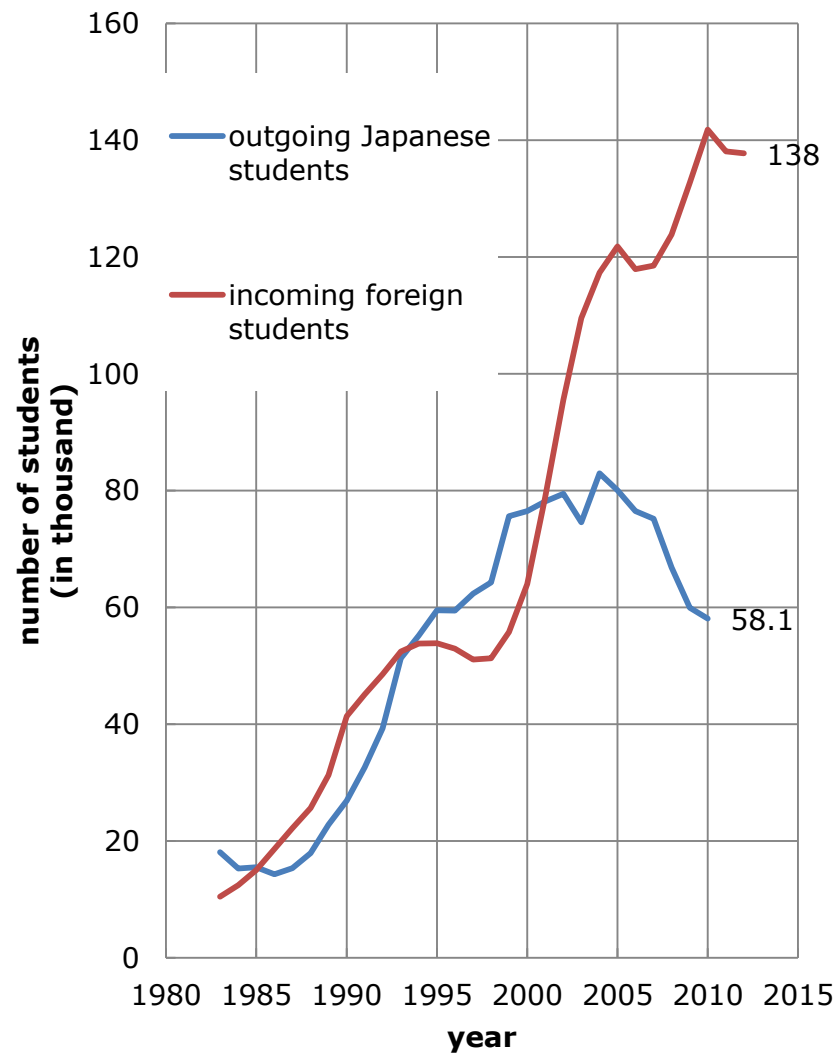


Transition of Japan's S&T Budget in the 2000s



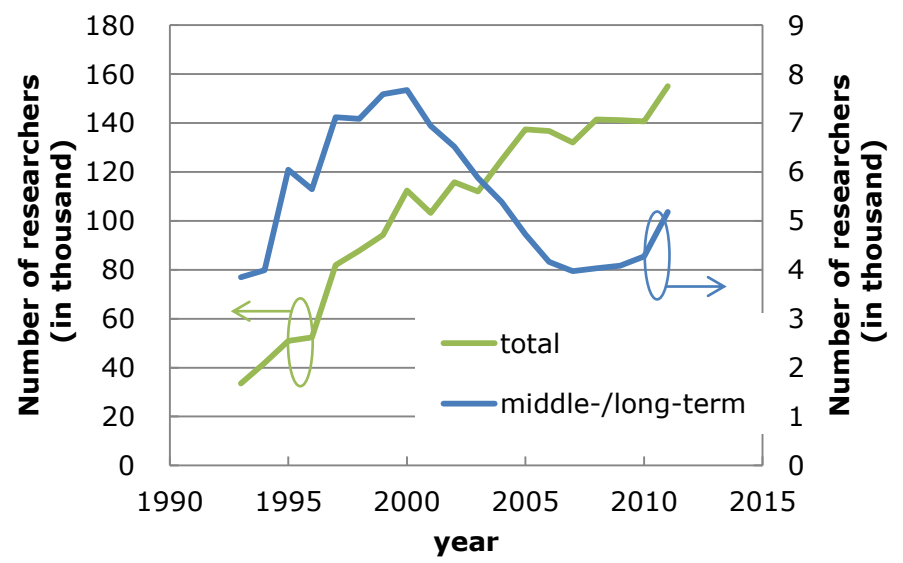
Mobility of ST&I Human Resources in Japan

Trends in Student Exchange (higher education stages)

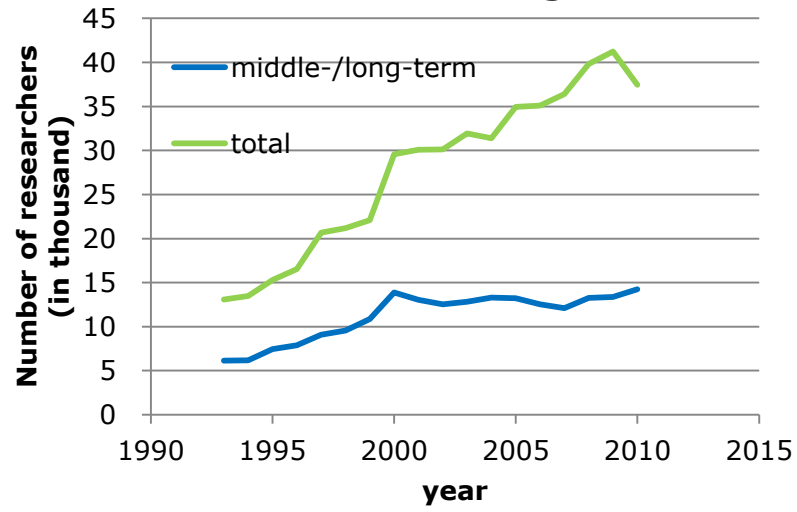


White Paper on Education, Culture, Sports, Science and Technology, 2013

Number of outgoing researchers



Number of incoming researchers



Middle-/long-term means that period of stay for research is over 30 days

Japan **S**ociety for the **P**romotion of **S**cience



日本学術振興会

- Established through an endowment by Emperor Showa in 1932

80th anniversary!



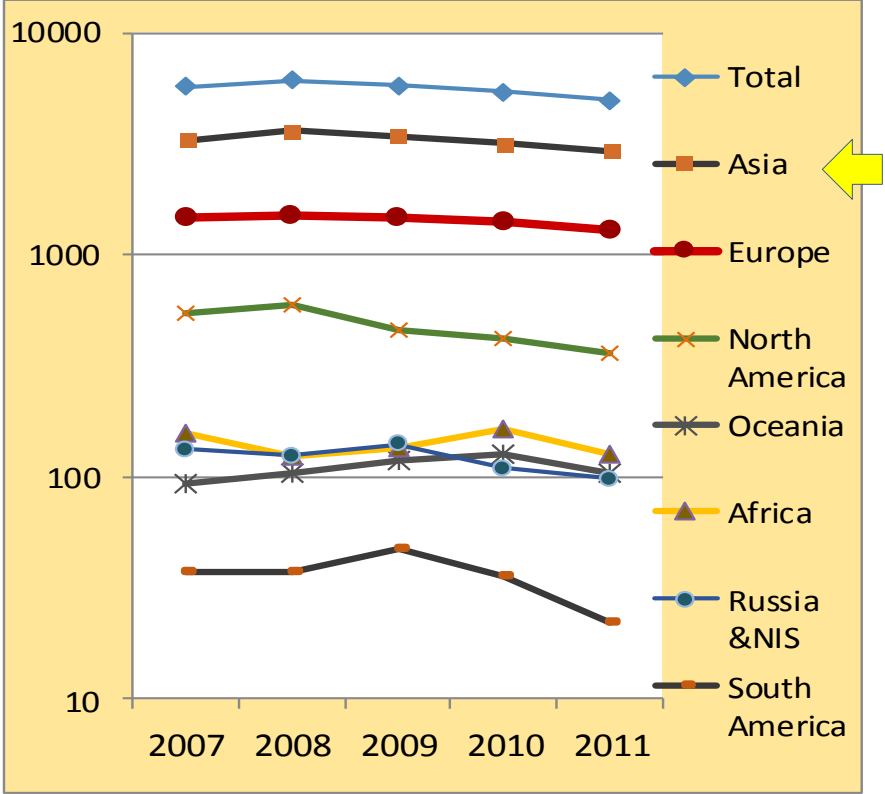
Major Functions of JSPS

- Funding research initiatives
- Fostering next generation of scientists
- Advancing international collaborations
- Promoting university reform

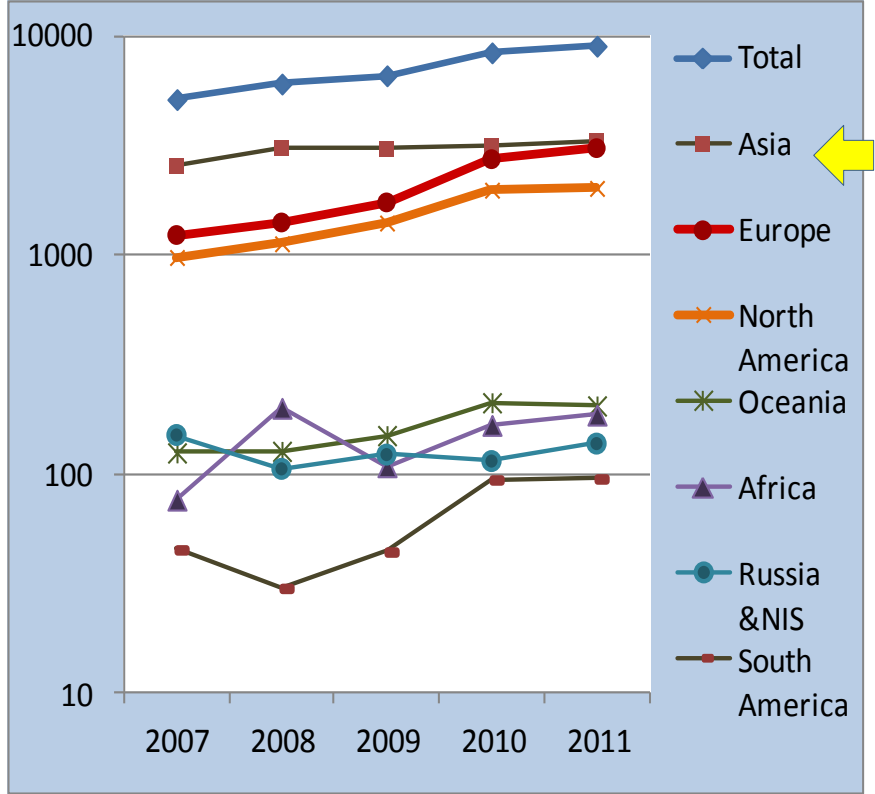


Number of Researchers Exchanged under JSPS Programs

<To Japan>



<From Japan>



Thailand → Japan

2010	2011	2012
306	324	160

Japan → Thailand

2010	2011	2012
293	399	280

International Programs of JSPS

Collaborative ties with 83 institutions in 45 countries

(1) Supporting International Joint Research and Seminars

- Bilateral Programs
- Core-to-Core Program
- G8 Research Councils Initiative
- A3 Foresight Program

etc.

(3) Inviting Researchers to Japan

- Postdoctoral Fellowships for Foreign Researchers
- Invitation Fellowship Programs for Research in Japan

etc.

(4) Sending Young Researchers Overseas

- Postdoctoral Fellowships for Research Abroad
- Strategic Young Researcher Overseas Visits Program for Accelerating Brain Circulation

etc.

(5) Supporting University Internationalization

- Supporting the Overseas Development of Japanese Universities
- Providing Practical Overseas Training for University Administrative Staffs

(2) Providing International Training Opportunities

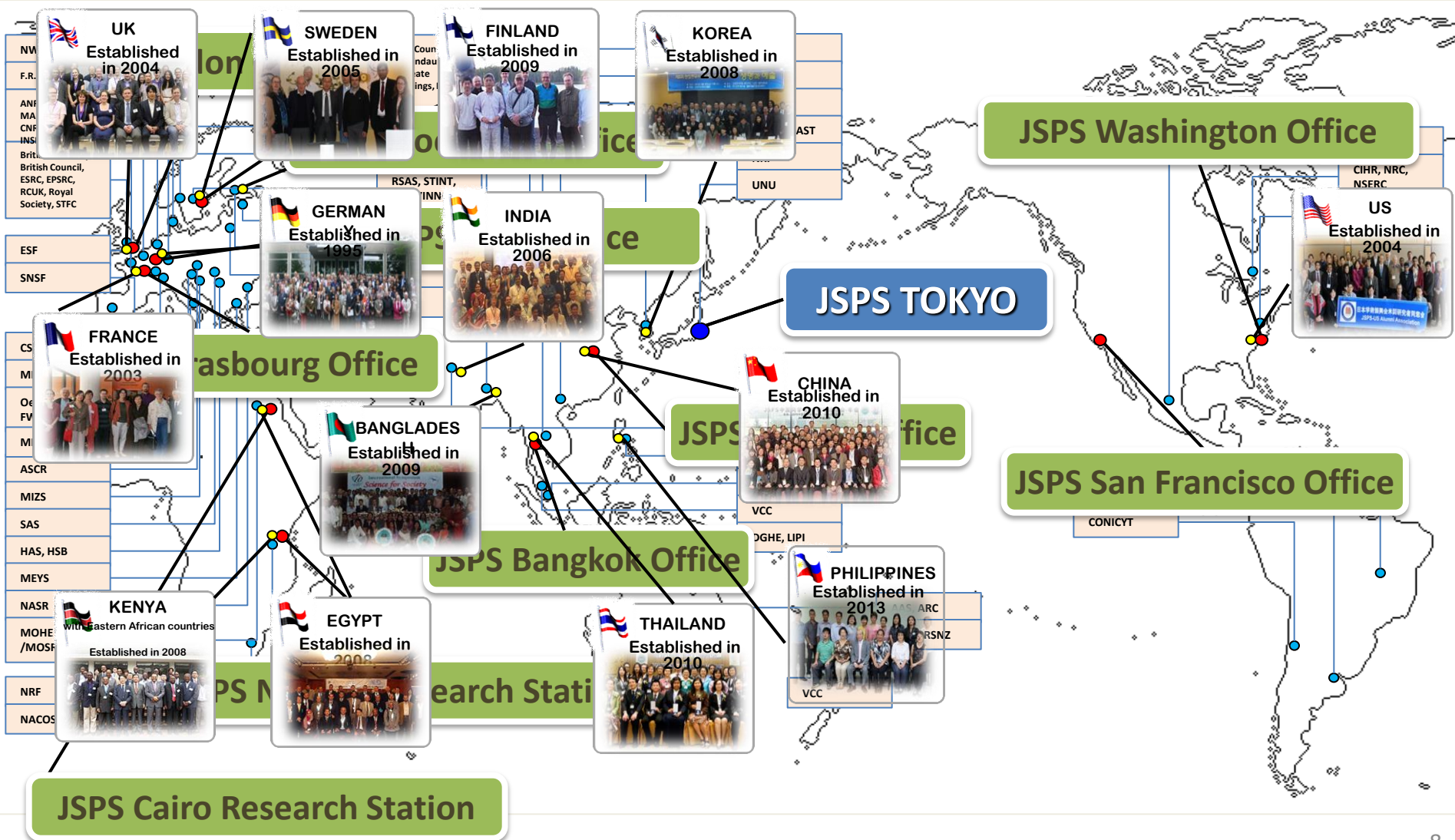
- Frontiers of Science Symposia
- ESF-JSPS Frontiers Science Conference Series for Young Researchers
- Travel Grant for Attending Lindau Meetings
- HOPE Meetings

etc.

JSPS's International Cooperative Networks

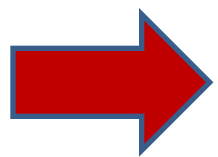


Build robust international cooperative networks through 1) partnership with overseas agencies, 2) JSPS Overseas Offices and 3) JSPS Alumni Associations.



JSPS International Programs

- ◆ Want to do research in Japan
- ◆ Want to get Ph. D. degree! But no time to go to Graduate school
- ◆ Want to do collaborative research with Japanese researchers



Yes! JSPS supports your demands!

- ◆ Fellowship Programs to Japan
- ◆ Ronpaku (Dissertation PhD) Program
- ◆ Bilateral Joint Research Projects and Seminars
- ◆ Core-to-Core Program

Fellowship Programs to Japan



Ph.D.

Career Stages of Researchers

Ph.D. Courses

6 years after Ph.D.

Mid career

Professor

Postdoctoral Fellowships (Standard)

1 - 2 years
About 240 grantees

Invitation fellowships For Research in Japan

(Long-Term)
2 - 10 months
About 70 grantees

(Short-Term)
14-60 days
About 210 grantees

Number of Thai fellows invited to Japan

		2010	2011	2012
Postdoctoral Fellowship		19	15	15
Invitation Fellowship	Short	0	3	2
	Long	0	1	3

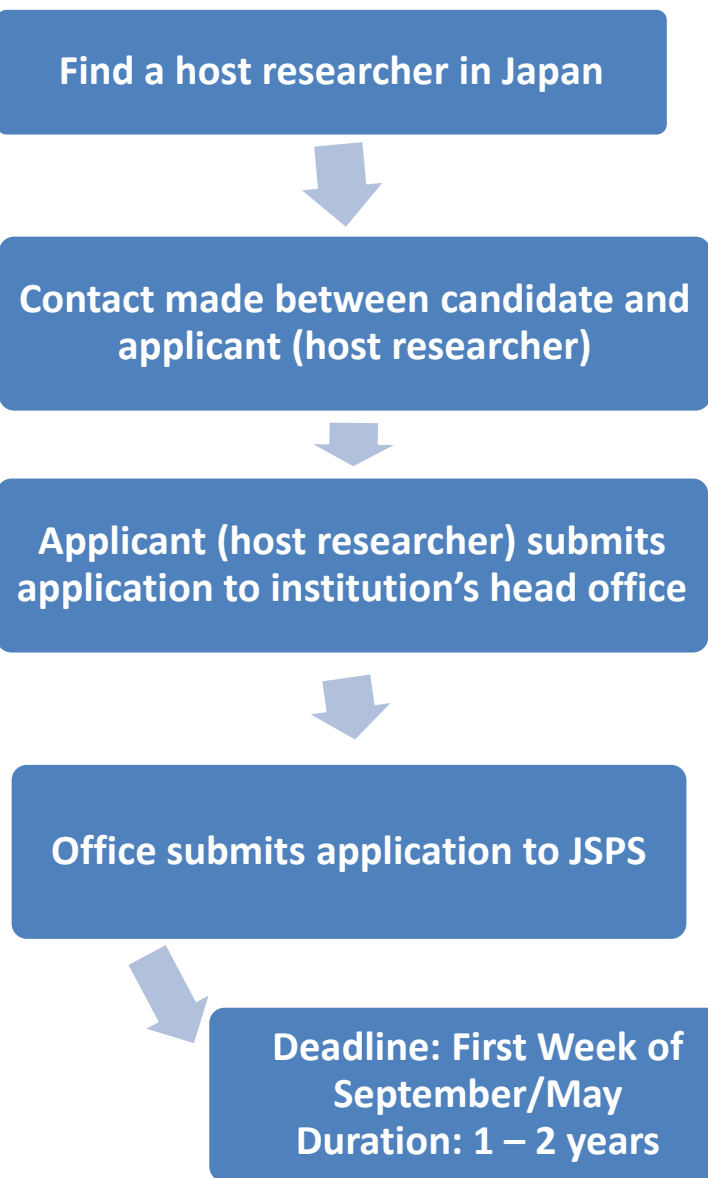
(Short-term S)
for Nobel laureates
or recipients of
similarly high-level
international prizes

7-30 days
About a few grantees

Fellowship Programs to Japan



Application Process



Application Deadline	1 st Recruitment: September 2 nd Recruitment: May
COMMENCEMENT OF FELLOWSHIPS	For the 1st Recruitment: April 1 – September 30 For the 2nd Recruitment: September 1 – November 30
*Invitation Fellowship Program for long term has only one deadline in September and commencement is from Apr. to March in the same fiscal year.	

Overview

- Aims to give opportunities for young researchers mainly in Asian and African countries to obtain PhD degrees from Japanese universities by submitting dissertations
- Fellows are invited every year to visit their Japanese host researchers within maximum period of 3 years
- Their host Japanese researchers are also allowed to visit the fellows in their countries
- Approximately 30 fellows are newly selected every year



Successful
Ronpaku fellow
with her host
researcher

Ronpaku (Dissertation PhD) Program

Eligibility of Japanese Host Researchers:

- A full-time researcher
- Engaged in implementing a doctoral course at the Japanese University

Eligibility of Ronpaku Fellow:

- Hold a full-time position as a researcher in a university or research institution in his/her home country
- Under age 45

of fellows successfully received PhD
(1978-2011)

Duration of Fellowship:

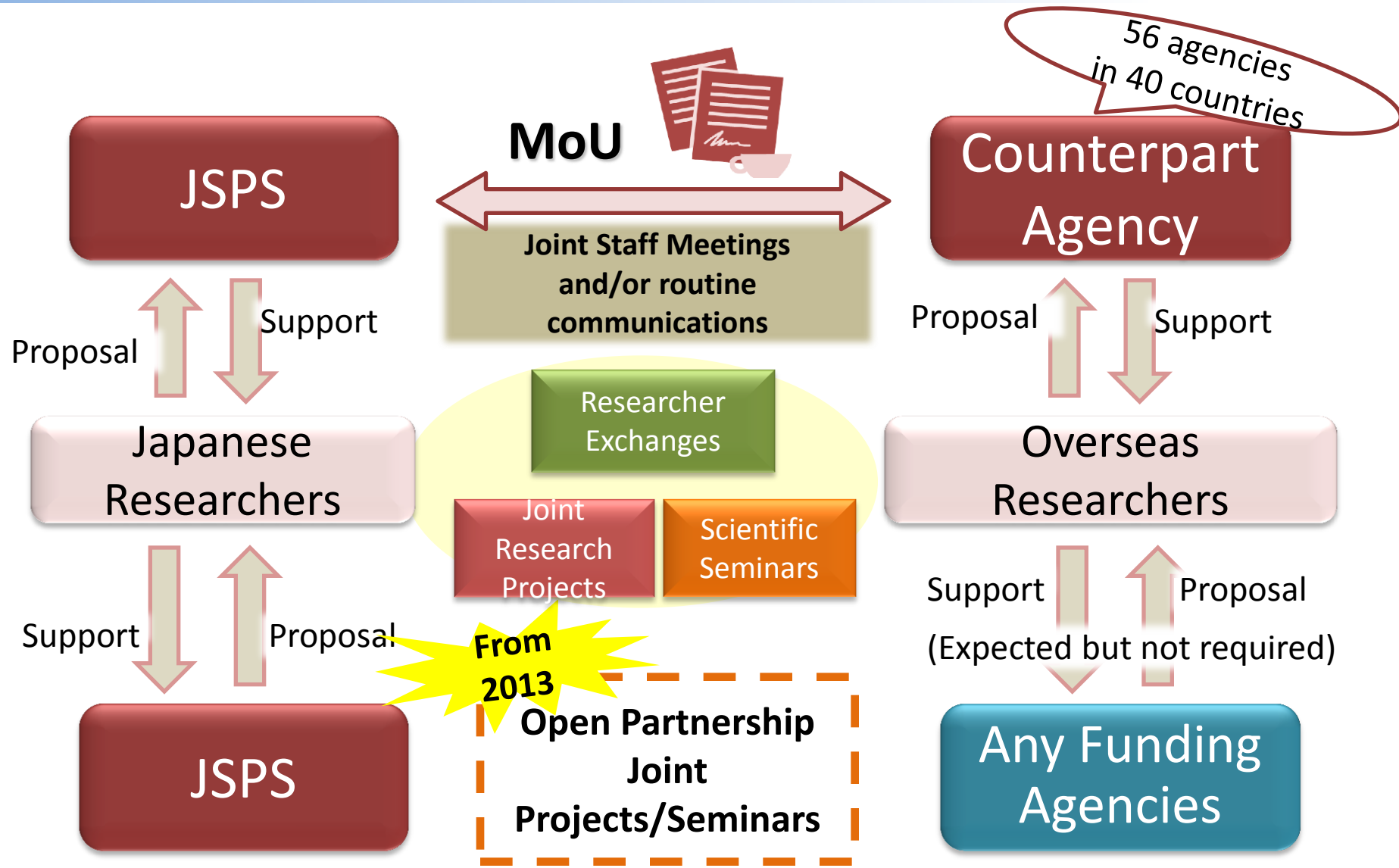
- Up to 3 years

Financial Support:

- Total funding 3.6 million yen, or 1.2million Bahts
- Travel expenses between Japan and Thailand and within Japan by the fellow and host researchers

Country	#	Country	#
Thai	197	Malaysia	24
Indonesia	135	Vietnam	25
Philippines	76	Bangladesh	10
Korea	70	Singapore	4
China	60	Mongolia	1
India	30	TOTAL (including other countries)	639

Bilateral Joint Research Projects / Seminars



In Thailand, NRCT is responsible for applying for Bilateral cooperation program. Please contact NRCT and see brochure for details.

A. Advanced Research Networks

- Promote International collaboration in cutting edge fields by creating world-class research hubs and fostering new generations of talented researchers in Japan and other countries
- Target: **Any country** in the world
- Grants: Up to JPY 20 million /year from JSPS + matching funds from counterpart countries required
- Project Duration: 5 years
- Number of projects per fiscal year: 10

B. Asia-Africa Science Platform

- Japanese research institutions take the lead in building research hubs and fostering young researchers to jointly contribute to Asia/Africa region
- Target: Asian and/or Africa countries
- Grants: Up to JPY 8 million/year from JSPS (doesn't require any matching funds)
- Project Duration: 3 years
- Number of projects per fiscal year: 10

Japanese research institutions are eligible to apply for this program as a core institution. Institutions in counterpart countries join and create research hubs with core institution.



Deadlines #1



Postdoctoral Fellowships (Standard)

1st recruitment: **September** for starting April-September

2nd recruitment: **May** for starting September-November

Invitation Fellowship Program for Research in Japan

<Short term>

1st recruitment: **September** for starting April-September

2nd recruitment: **May** for starting October-March

<Long term>

September for starting all year

RONPAKU (Dissertation PhD) Program

August

※Candidates must send their application documents to their prospective Japanese advisor well in advance of deadline.

*As some universities and institutions have their own deadline, please consult prospective Japanese host researchers with regard to the time frame.

Deadlines #2



Bilateral Joint Research Projects

Please contact NRCT for application (see brochure).

[With JSPS's Counterpart Institutions (NRCT in Thailand)]: September

Core-to-Core Program

- A. Advanced Research Networks
- B. Asia-Africa Science Platforms

October

*As some universities have their own deadline, please consult prospective Japanese host researchers with regard to the time frame.

Thank you !!



**For details, please visit our website:
www.jsps-th.org**