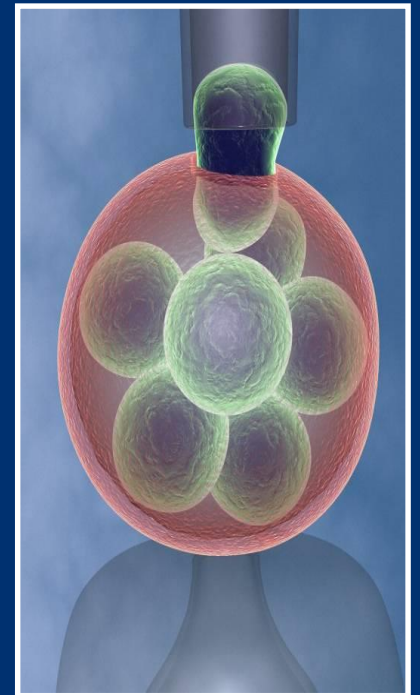


Funding at Wellcome

UK-Thailand Funding Webinar
28th May 2020



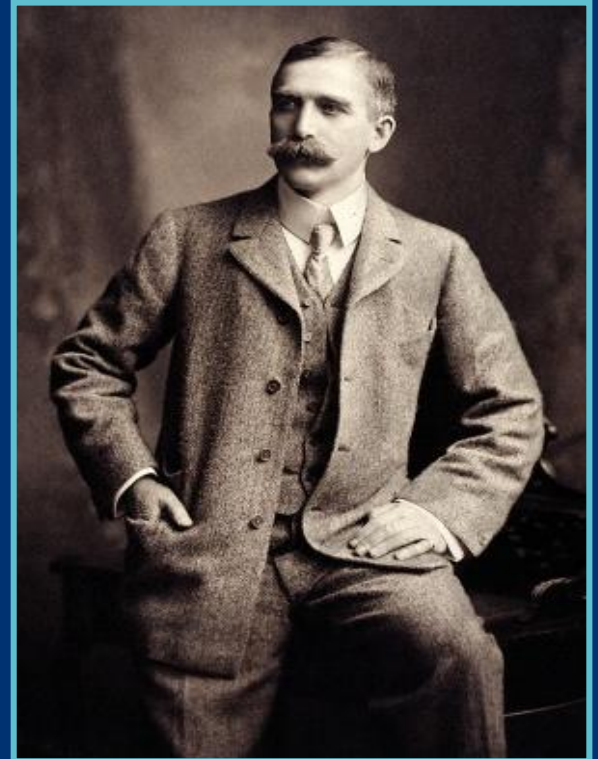
Wellcome

We are an independent global charitable foundation dedicated to understanding and improving health.

We were established in 1936 under the will of Sir Henry Wellcome.

We are funded from a private endowment ~ £26 Billion

We expect to spend ~£5 billion on charitable activities over the next five years



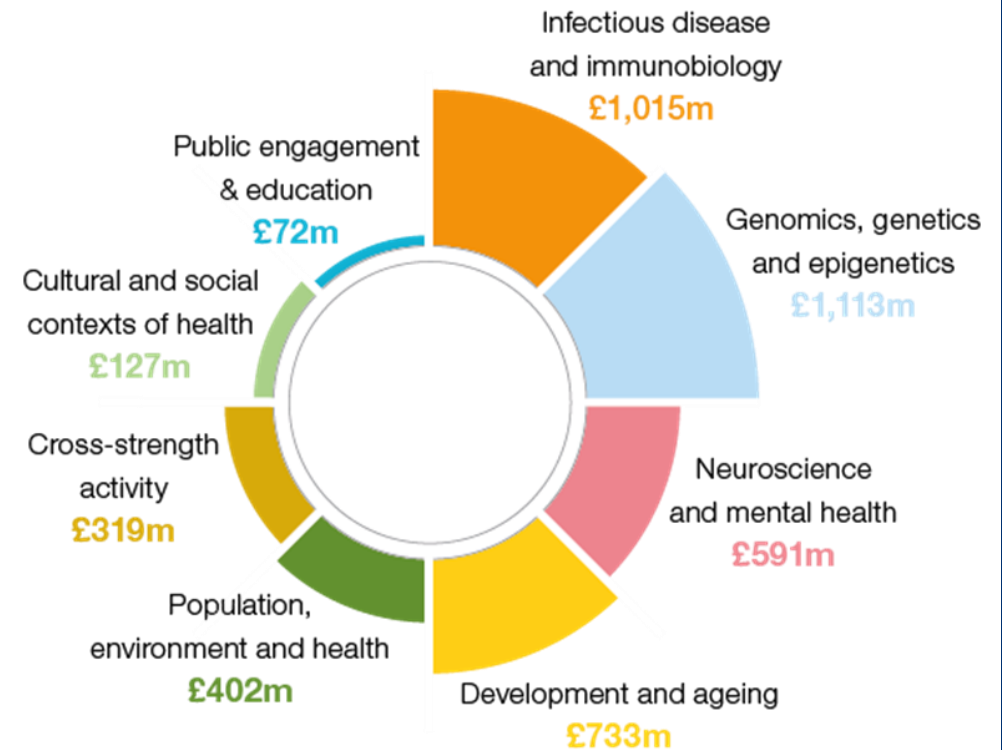
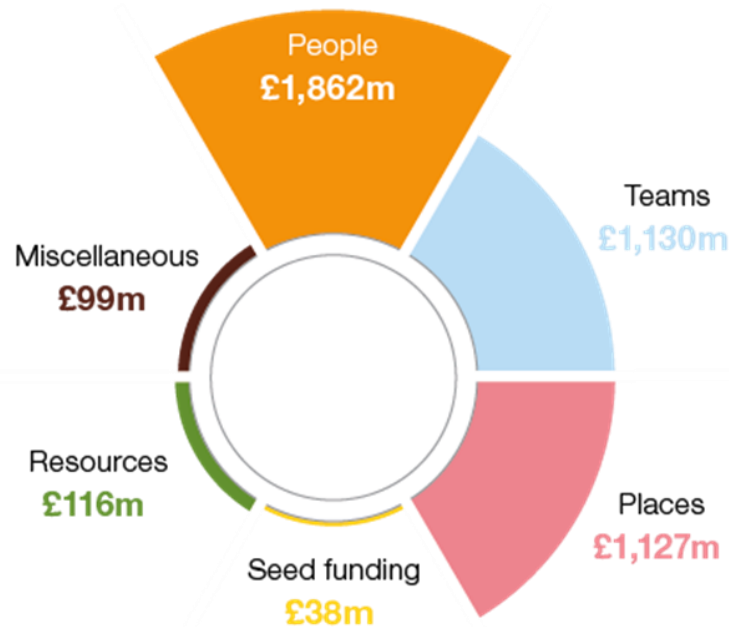
What we do

We want to improve health by:

- Understanding the processes that underpin life
- Exploring the way social, historical and ethical factors affect how people experience healthcare
- Developing new technologies, treatments and diagnostics
- Engaging the public
- Influencing healthcare policy



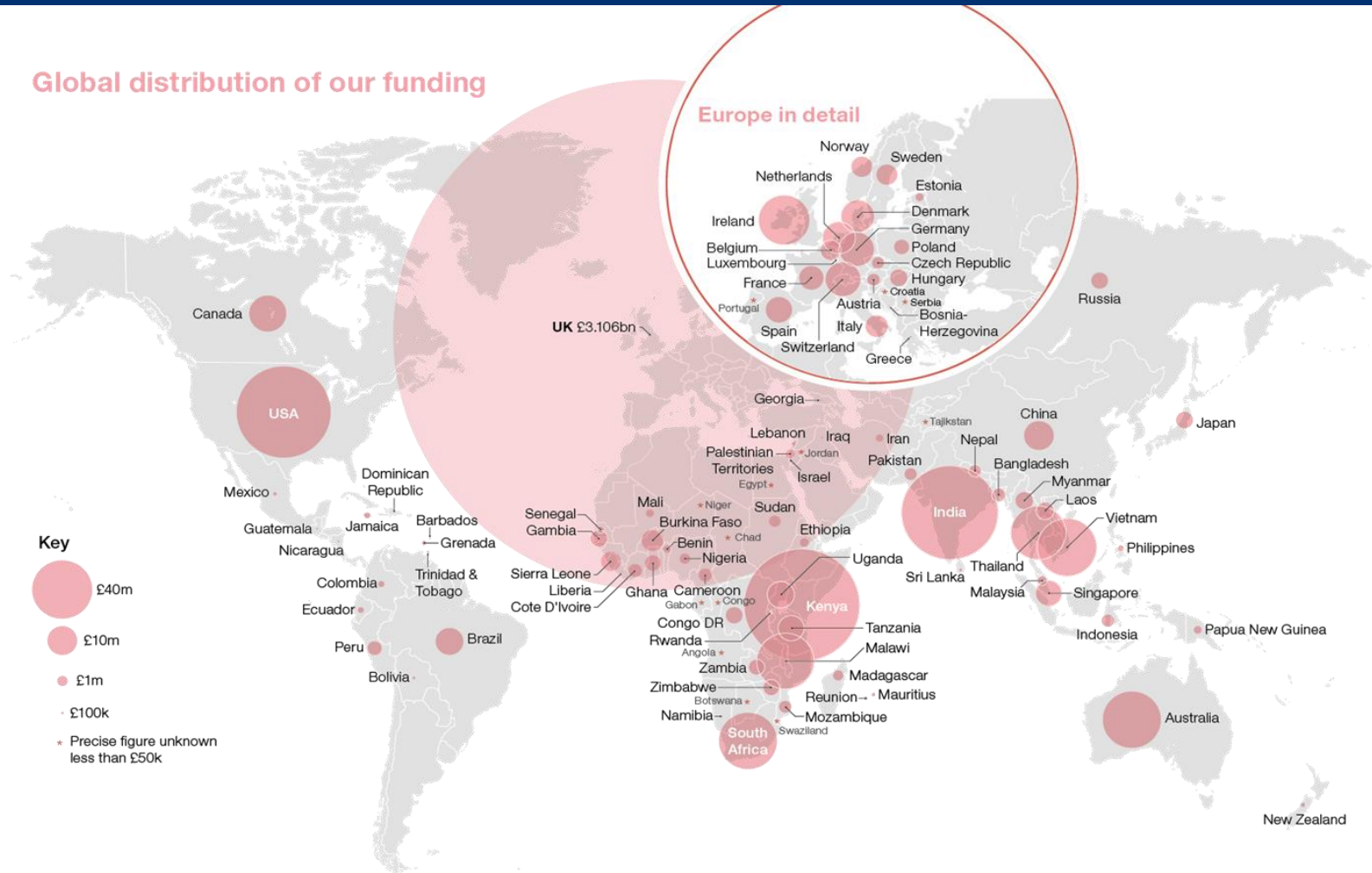
Our current grant portfolio



Note: The categories 'Places' and 'Genomics, genomics & epigenetics' in the above charts each include £550m for Sanger Centre operating costs over 5 years.

Our current grant portfolio

Global distribution of our funding



How we organise our funding

‘Primary’

- Eligibility mainly UK, Ireland & LMICs
- Funding is mostly response-mode and competitive
- Expenditure c£900 million per year, will continue at similar levels.

‘Reserve’

- Strategic Initiatives to deliver specific outputs and outcomes
- Large scale (e.g. Coalition for Epidemic Preparedness Initiative).
- Mostly not open response-mode.

'Reserve' funding for strategic initiatives

These are:

- Vaccines
- Drug Resistant Infections (AMR)
- Mental Health
- Our Planet, our Health
- Diversity and Inclusion
- Strengthening Research Ecosystems in Africa and Asia
- Science Education
- Snakebites
- Data for Science and Health

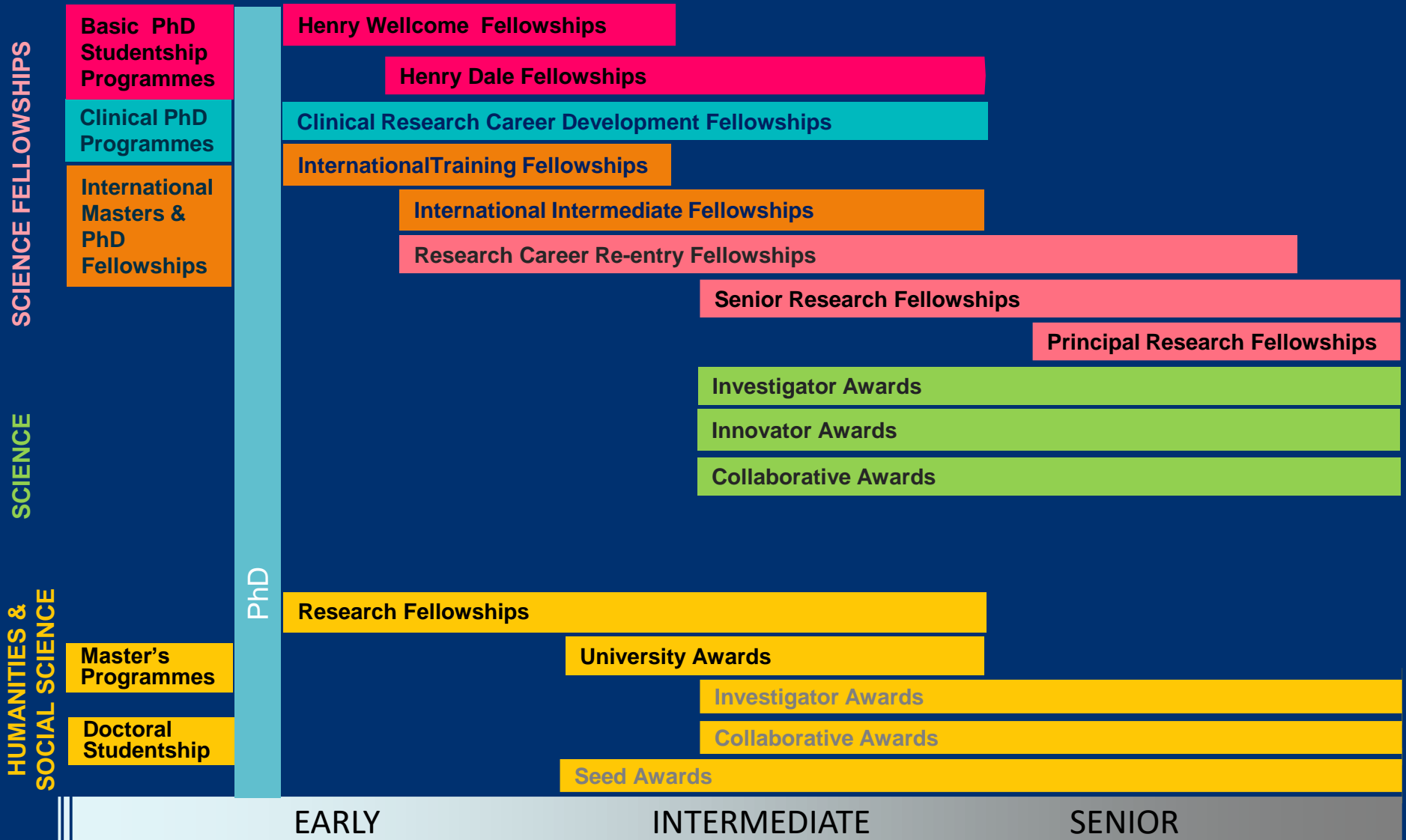
Current funding opportunities

Primary funding

Response mode funding for:

- **People** - support for individuals and career pathways.
- **Teams** - support for research groups.
- **Places** – core support for centres of excellence and building capacity

Support for researchers



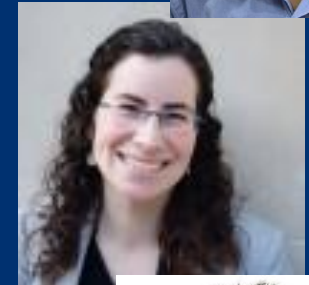
Fellowships

- To attract, train and retain the best researchers (basic and clinical research)
- Schemes designed for each stage of the research career
- Salary of the Fellow provided
- Plus research costs - including the salaries of the Fellow's research team, consumables, equipment and other expenses
- Award size and duration varies, depending on the career stage and scheme
- Over 550 current Fellows.



International Fellowships

- 3 schemes:
 - International Masters Fellowships
 - International Training Fellowships
 - International Intermediate Fellowships
- For nationals of low or middle income countries.
- Research must focus on a health priority in a low or middle income country
- Must be based in a low or middle income country.



Investigator Awards

- For researchers with established academic posts, from newly appointed lecturers to senior professors
- Applicants assessed according to their career stage
- Research question drives duration and value of award.
- Up to 7 years – full research costs supported
- Applications from Joint Investigators considered.
- Over 400 current Investigator Award holders.



Collaborative Awards

For three or more individuals to deliver something that could not be achieved by any alone

Question driven

OR 'Core' awards to underpin question driven research

'Normally' up to £4 million

Talk to the office before proceeding



The future

Our New Strategy

To:

- establish a clear aspiration and bold ambitions for future Wellcome funding
- Underpinning base of discovery research
- Strategic focus on health Impacts of:
 - Infectious Disease
 - Mental Health
 - Climate Change

Preparing an application

Assessment process



General Tips

Write the best application you can, at the right time, and ask for what you need.

Write the application in a way that addresses all the reviewers (experts in the field, and generalist committee members and interviewers).

Internal peer review: Ask colleagues for feedback within and outside your discipline. Hold mock interviews. Consider approaching grant-holders and committee members for insight.

Funder feedback: Try to discuss your application with funders before submitting your application. Check out their websites for advice.

Assessment criteria

Person

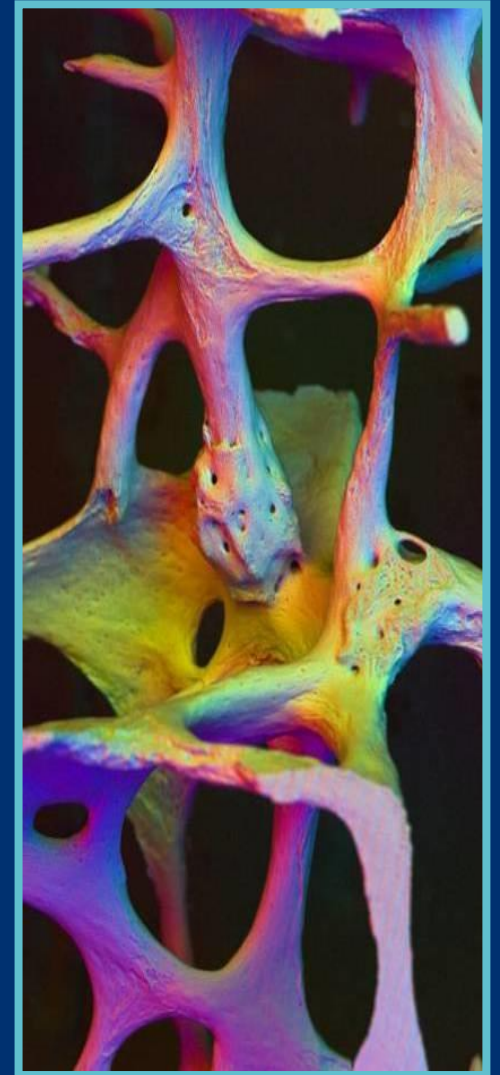
Programme

Place

‘Grantsmanship’

‘Good writing will not save bad ideas,
but bad writing can kill good ones’

Jacob Kraicer *The Art of Grantsmanship* 1997



Assessment criteria – ‘3Ps’

Person

What is your track record?

What is your vision of how the funding will contribute to your career?

What are your longer-term aspirations?



Assessment criteria – ‘3Ps’

[this is the most important slide in this deck]

Programme

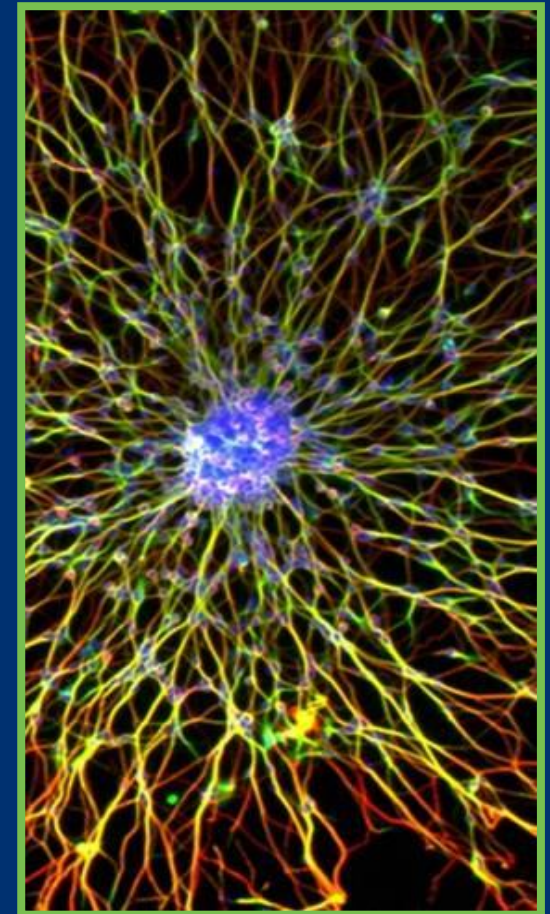
What is your question?

Is it interesting and/or important?

Can you answer your question?

Are the resources requested appropriate?

*Think less about what you will do, and more about what you will **achieve** by doing it*



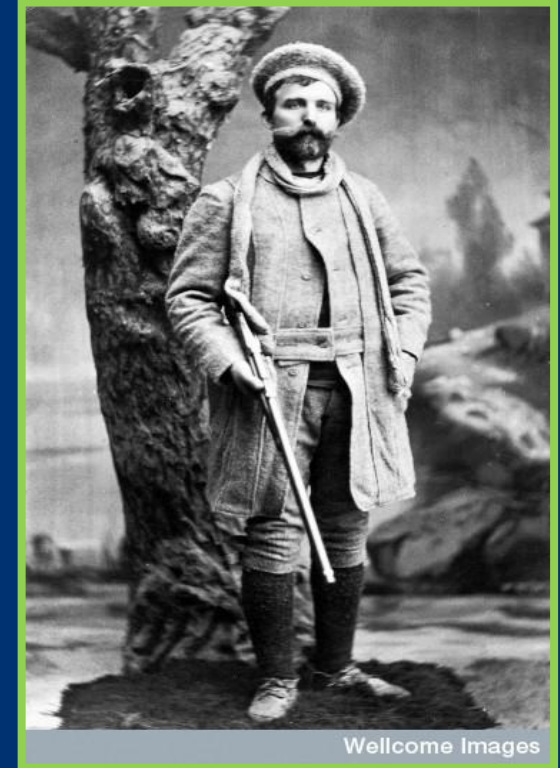
Assessment criteria – ‘3Ps’

Place

Who is/are your sponsor(s)?

Why is this place good for your research?

And good for your career?



Keep in touch.....

- Read our website
- Follow us on Facebook and Twitter
- Sign up for our newsletter

Latest funding news, policy changes and events. Can't see this email? [View online](#)



In this research update, we're pleased to let you know that we're changing our policy so you can now transfer grants outside the UK. We also have a few funding scheme deadlines looming, so please share these with any colleagues who might be interested. And we want your feedback to help us improve our website wellcome.ac.uk.

FEATURED NEWS

Researchers can now transfer our grants outside the UK

