

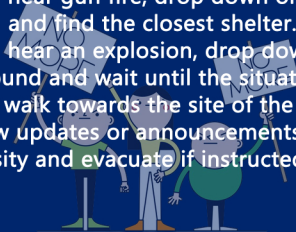


ON-CAMPUS EMERGENCY PROCEDURES

**Mahidol University Student, Academic & International Services
(MUSAIS)**

RIOT

- Find your possible escape routes. Leave the area as soon as possible. Walk but do not run.
- If you hear gun fire, drop down onto the ground and find the closest shelter.
- If you hear an explosion, drop down onto the ground and wait until the situation is safe. Do not walk towards the site of the explosion.
- Follow updates or announcements from the University and evacuate if instructed to do so.



- Turn off electronic devices and any other equipment.
- Do not attempt to fix the electronic system yourself.
- Call the emergency notification number: **02-441-4400.**



MEDICAL EMERGENCY

- Call an ambulance at **1669** to report the problem and your location.
- Do not move the injured person unless they are in immediate danger.



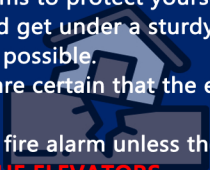
If your friend has signs or symptoms of an infection, recommend that they get an initial diagnosis at the nearest Students Health Care Unit .

If you are ill, visit the doctor and follow the instructions accordingly. Get enough sleep, take medicine as prescribed, and drink lots of water.

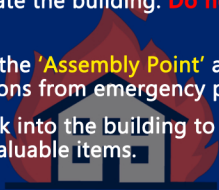
If you have a fever or symptoms of an infection, try to stay at home for at least 24 hours.

If you must leave your home you can wear sanitary mask to reduce the risk of infecting others.

- Drop down onto the ground.
- Cover your head and neck with your arms to protect yourself from falling debris, and get under a sturdy table or other furniture if possible.
- Wait until you are certain that the earthquake has finished.
- Do not pull the fire alarm unless there is a fire.
- **DO NOT USE THE ELEVATORS.**
- When the earthquake has finished, immediately exit the building.



- If you see a fire, immediately pull the nearest fire alarm or call the emergency notification number: **02-441-4400** as you exit the building.
- Follow the signs for the **'Fire Exit'** or **'Emergency Stairs'** to evacuate the building. **Do not use the elevators.**
- Go directly to the **'Assembly Point'** and await further instructions from emergency personnel.
- Do not go back into the building to collect your belongings or valuable items.



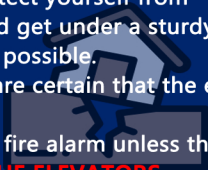
FIRE

EVACUATION

- When you hear the fire/ evacuation alarm, immediately follow '**Fire Exit**' or '**Emergency Stairs**' signs.
- Go to the '**Assembly Point**' located at your faculty/ college/ institute.
- Once at the Assembly Point, follow the instructions or announcements of the University.

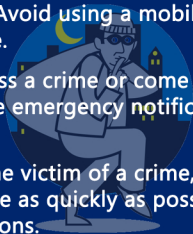


- Drop down onto the ground.
- Cover your head and neck with your arms to protect yourself from falling debris, and get under a sturdy table or other furniture if possible.
- Wait until you are certain that the earthquake has finished.
- Do not pull the fire alarm unless there is a fire.
- **DO NOT USE THE ELEVATORS.**
- When the earthquake has finished, immediately exit the building.



CRIME

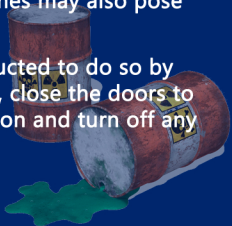
- Avoid wearing excessive jewelry or visibly carrying valuable items.
- Avoid using a mobile phone when walking alone.
- If you witness a crime or come across a crime scene, call the emergency notification number: **191**.
- If you are the victim of a crime, you must report it to the police as quickly as possible and follow their instructions.



If you have any problems regarding sexual harassment, mental wellbeing, or your visa, do not hesitate to contact the International Relations Office at your faculty/ college/ institute or MUSAIS.



- **Immediately notify others** in the area of the spillage or leak.
- **DO NOT TOUCH** any harmful substances. Beware that fumes may also pose a risk.
- Evacuate the area as instructed to do so by emergency staff. If possible, close the doors to prevent further contamination and turn off any ignition sources.



**Spillage or
Leak of Hazardous Materials**