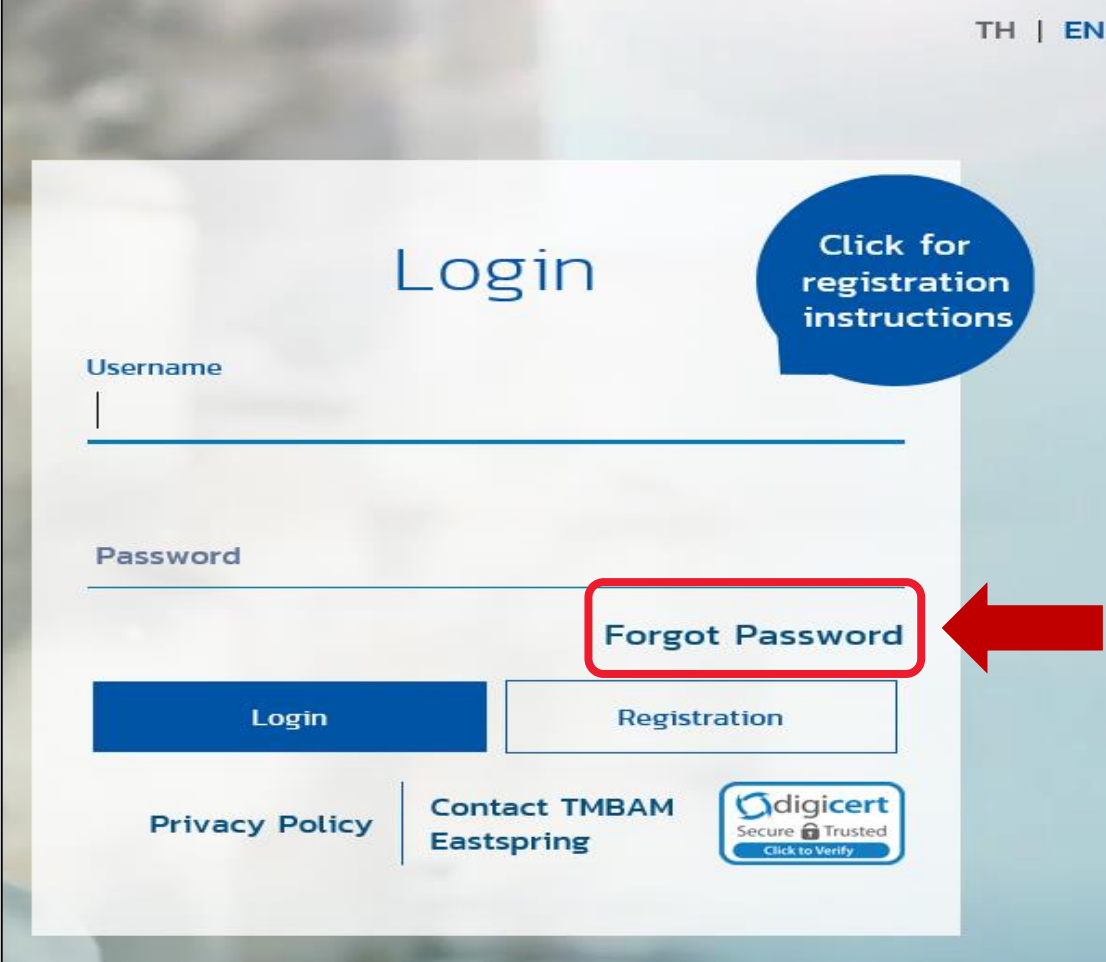


FUNDLINK M REGISTRATION (MEMBER)



FORGOT PASSWORD?

FORGOT PASSWORD (CONT.): CLICK TO FORGOT PASSWORD



TH | EN

Login

Click for registration instructions


Username

Password

[Forgot Password](#)

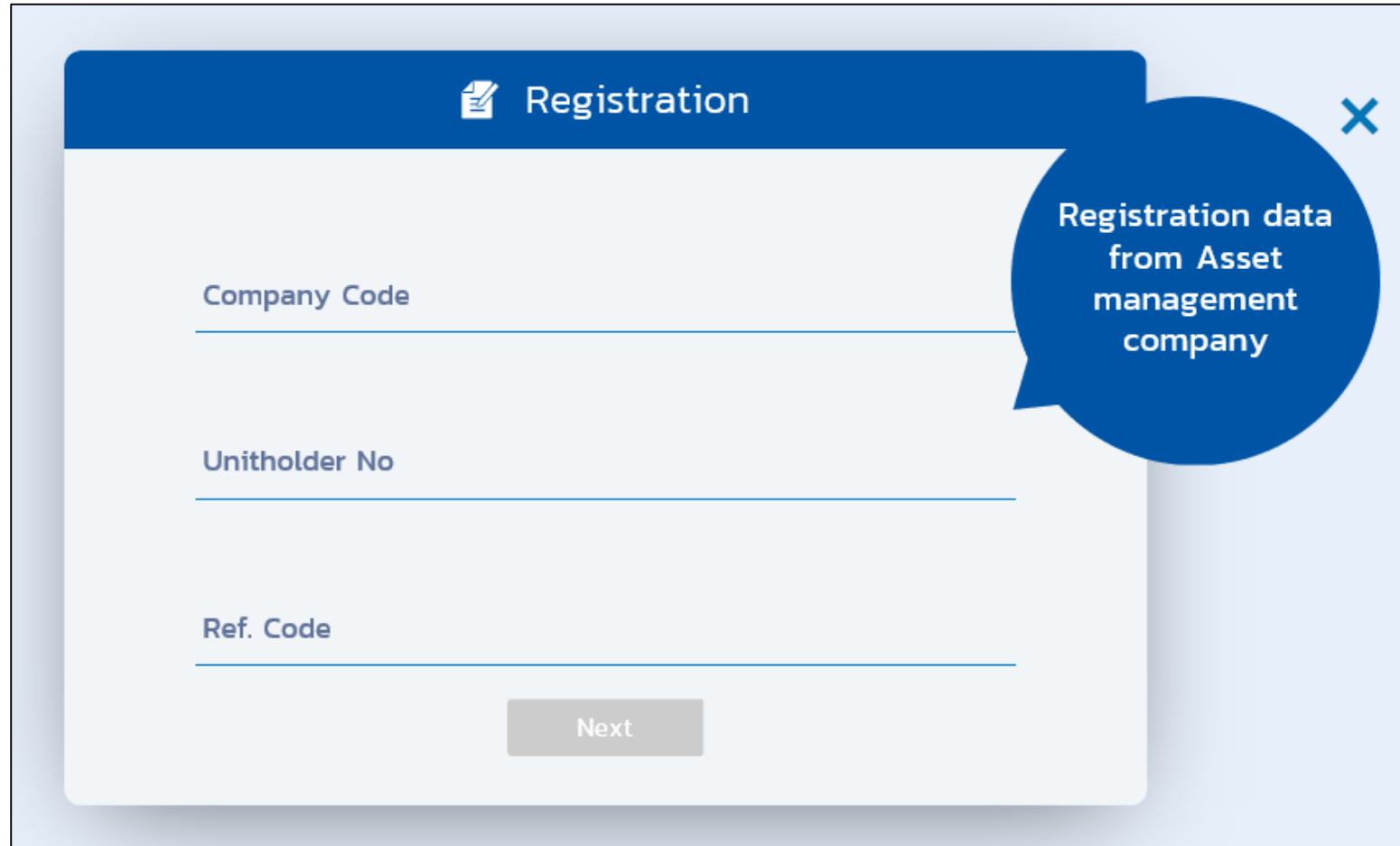
[Login](#) [Registration](#)

[Privacy Policy](#) | [Contact TMBAM Eastspring](#)

 digicert
Secure Trusted
Click to Verify

A red arrow points to the 'Forgot Password' link, which is enclosed in a red rounded rectangle. A blue speech bubble in the top right corner contains the text 'Click for registration instructions'.

FORGOT PASSWORD (CONT.): FILL IN REGISTRATION PACKAGE (3 CODES)



The image shows a screenshot of a web application's registration form. The form is titled "Registration" and is contained within a light blue window. The form has three input fields: "Company Code", "Unitholder No", and "Ref. Code". A "Next" button is located at the bottom of the form. A blue callout bubble on the right side of the form contains the text "Registration data from Asset management company".

Registration

Company Code

Unitholder No

Ref. Code

Next

Registration data from Asset management company

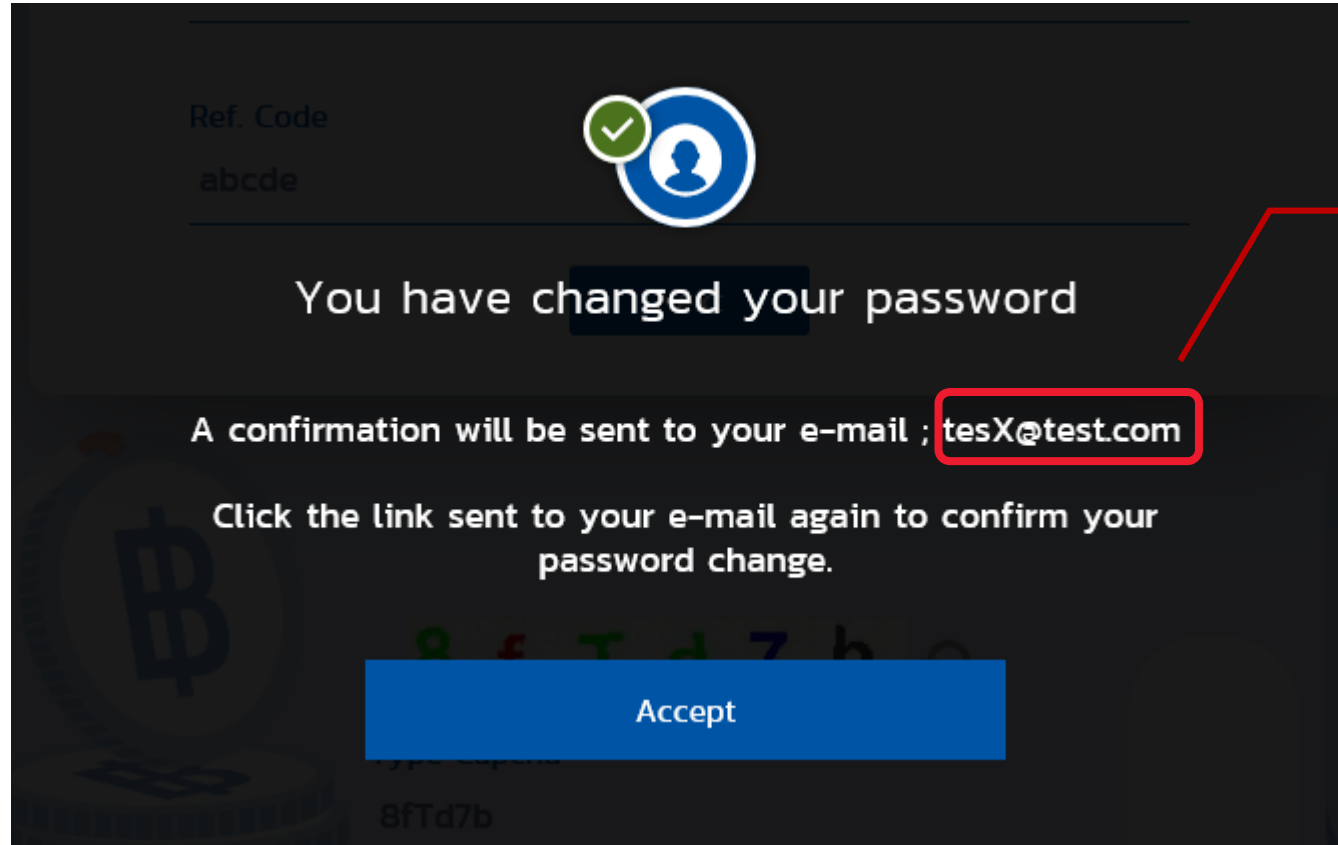
FORGOT PASSWORD (CONT.): TYPE CAPCHA



The screenshot shows a user interface for a 'Type Capcha' step. At the top, a CAPTCHA image displays the characters '8 f T d 7 b' in various colors (green, red, green, green, blue, black) on a light yellow grid background. To the right of the characters is a circular refresh icon. Below the CAPTCHA, the text 'Type Capcha' is displayed above a horizontal input line. At the bottom of the form, a blue button with the text 'Confirm' is highlighted with a red rectangular border.

FORGOT PASSWORD (CONT.)

YOUR CHANGE REQUEST WILL BE SENT TO YOU EMAIL



THE LINK TO CONFIRM
"CHANGE PASSWORD"
WILL BE SENT TO THIS
EMAIL

FORGOT PASSWORD (CONT.) :

CLICK LINK FROM EMAIL

MEMBERS HAVE TO CONFIRM
CHANGE PASSWORD WITHIN 1
DAY AFTER REQUEST

Greeting from TMBAM

Dear พนักงานทดสอบ_1635771 ดีมาก_1635771 (รหัสพนักงาน:1635771)

Your request to reset password on Fundlink M is completed.

Please set your new password by clicking the URL below or copying the URL and pasting it to your browser.

<https://fundtrade.tmbameastspring.com/MChoice>

This is an automated message; please do not reply to this e-mail.

For further inquiries, please contact the Call Center 1725 during office hours from 8.30-17.30 hrs.

Thank you for using our service

PVD-TMBAM Team

FORGOT PASSWORD (CONT.): TYPE CAPCHA

FundLink M



Type Capcha

q b Y r M Q ↻

Type Capcha

Confirm

FORGOT PASSWORD (CONT.):

ENTER NEW PASSWORD

ENTER UNITHOLDER NO.

ENTER NEW
PASSWORD AND
CONFIRM
NEW PASSWORD AGAIN

CLICK ACCEPT AND
CONFIRM

Forgot password

Details of user

Username

Unitholder No

New password

Confirm new password

Click to accept
I have acknowledged the warnings pertaining to the use of these services

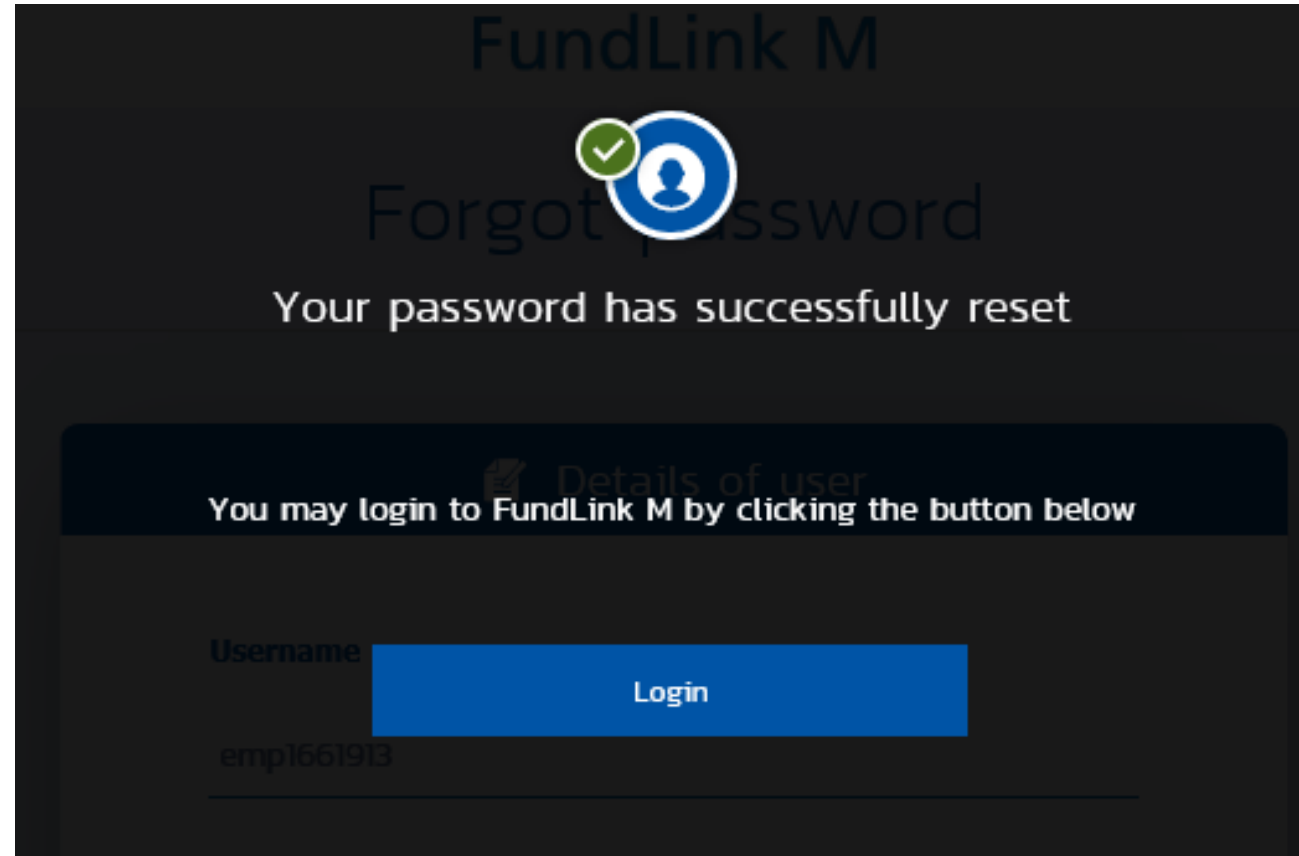
HOW TO SET PASSWORD

8+	A	a	#	1
Number of characters	Uppercase characters	Lowercase characters	Special non-alphabetic characters	There are numerical characters in your password

Recommendation

- ⚠ Your new password cannot be the same as the last 3 passwords you have used before
- Do not select a password comprising a recognizable pattern such as abcd?1234
- Do not select a password that contains elements traceable to you
- Do not select a password that is a common word found in dictionaries

FORGOT PASSWORD (CONT.): CHANGE PASSWORD COMPLETED





INVESTMENT ADVISORY DEPARTMENT
PROVIDENT FUND

TMBAM EASTSPRING CALL.0-2838-1800